

PLAYBILL®

Presented by
Pike County Little Theatre
McComb, MS

Based on the book by E.B. White
ADAPTED BY JOSEPH ROBINETTE

Charlotte's Web



DIRECTED BY: DEBBIE WATKINS

STATE THEATRE
222 STATE STREET
MCCOMB, MS 39648

PRESENTED BY SPECIAL ARRANGEMENTS WITH DRAMATIC PUBLISHING, INC

A PIKE COUNTY LITTLE THEATRE PRODUCTION

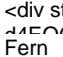
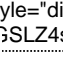

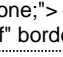
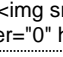
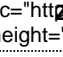
**Pike County Little Theatre
Pike County Little Theater**

PRESENTS

CHARLOTTE'S WEB

**Based on the book by E.B. White
Adapted for stage by Joseph Robinette
Presented by special arrangement with
Dramatic Punlishing Inc.**

Directed by Debbie Watkins and Katie Quin

Wilbur Colin Richardson ~ Jodie Coble

Charlotte Emma Jarrell ~ Lorraine Davis

Templeton Jeff Beck ~ Tristan Fleming

Mr Arable Noah Martin ~ Randy Bullock

Mrs Arable Madelyn Phillips ~ Jo Bullock

Avery Waylon Martin ~ Colt Woodard

Homer Zuckerman Nathan Holifield

Edith Zuckerman Allie Hodges

Lurvey Blade Martin ~ Mason Woodard

Sheep Carmen Duncan ~ Ryley Bullock

Lamb Ellen Parker ~ Alexa Jordon

Goose Ella Lambert ~ Kristel Davis

Gander Bryce LeBlanc ~ Steven Hebert

Narrator 1 Ameliza Roberts ~ Felicity Cash

Narrator 2 Pailyn Magee ~ Celena Johnson

Narrator 3 Aly Lynch ~ Caroline Williams

Announcer Shane Adams ~ Seth Karas

Reporter Brooke Richardson ~ Ed Sylynce

Spider 1 Emma Richardson ~ Karys Miller

Spider 2 Amberlyn Clements ~ Kalila Miller

Spider 3 Remlie Moore ~ Kristen Jordan

Running Spiders Ralyn Fontenot
River Swearington
Wyatt Brister
Lily Harrison
Abigail Gault
Justin Reid
Cady Parker

Fairgoers/Spectators Jonathan Wells ~
Brooke Richardson
Ellen Parker
Caroline Williams

CAST

Production / Creative

Artistic Design	Barbie Coble
Charlotte's Web "Experience"	Erin Fortenberry Donna Tolar
Concessions Coordinator	Diane Boyd
Ticket Sales/Box Office	Jennifer Jarrell
Program	Jerrid Fleming
Admin Assistant	Chris Richardson
Make-Up	Miranda Reid
Production Photographer	Elise Parker
Lighting & Sound	Dana Echols Randon Bullock
Set Construction and Dressing	Nathan Holifield Clifford Holifield Lola Holifield Jodi LeBlanc Barbie Coble Nikki Lynch Ruston Brister Cast Members
Videographer	Gavin Jarrell
Producers	Every cast and crew member and every parent.



601-657-4487

Reynolds'
Florist And Gifts

P.O. BOX 355 133 MAIN ST.

LIBERTY, MS 39645

teleflora.

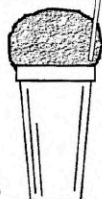
OWNERS

JEFF & JESSICA S. FREEMAN

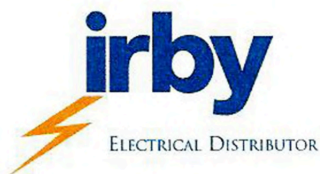
SNOW-DOG CABANA



*Snow Cones &
Hot Dogs*



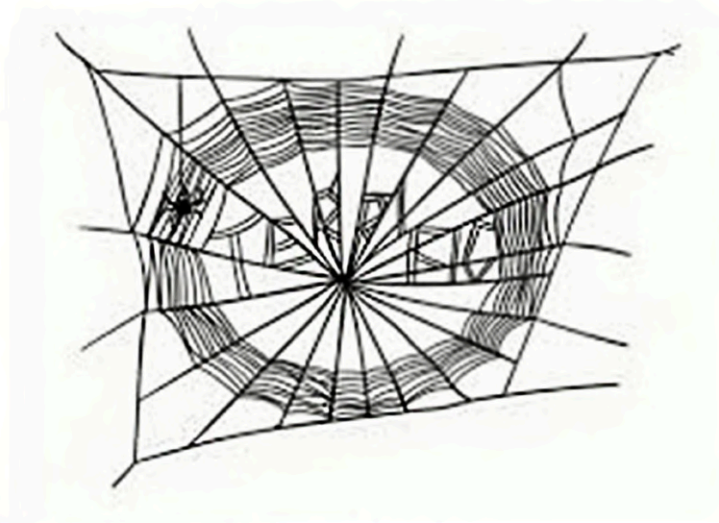
In Liberty, MS behind the Barber Shop.



KEITH DAVIS
Inside Automation Specialist

1260 Parklane Road
Mccomb, MS 39648
TEL 601-600-5173
CELL 601-814-1783
FAX 601-249-2915
kdavis@irby.com
www.irby.com





We are proud
of you,
Maddie!

Machine
Diagnostics



Machine Diagnostics
Predictive Maintenance Solutions

Get started with a FREE quote ☎ (601) 600-4128

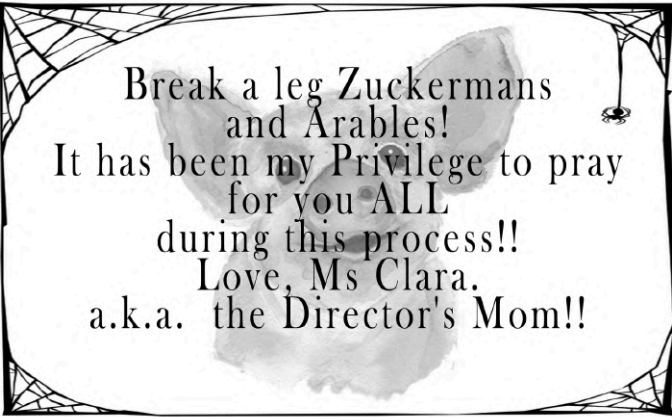
**Jacob Poole**

Agent


183 West Blalock Circle, PO Box 717
Liberty, MS 39645-7238
Bus 601 657 4375 Fax 601 657 4040
jacob.poole.pre6@statefarm.com

The greatest compliment you can give is a referral.





Break a leg Zuckermans
and Arables!
It has been my Privilege to pray
for you ALL
during this process!!
Love, Ms Clara.
a.k.a. the Director's Mom!!



Chiropractic Center Of McComb
Shane M. Hinckley, DC, DABFE, DAAPM, CCSP
Marla Vaden Hinckley, DC

150 Marion Ave.
McComb, MS 39648
Telephone: (601) 684-9200
Fax: (601) 684-1198

Genie Kimmel, DVM

Telephone
601-684-1581



400 Presley Blvd.
McComb, MS 39648

www.mccombanimalhospital.com



Holmes
Stationers & Gifts



Delores Feldman
Susan Gibbs
owners

www.holmesstationers.com

The Teachers' Store

www.holmesstationers.net

Post Office Box 729
1136 US Highway 51-98
Summit, MS 39666

601-276-2700 v
601-276-9552 f



BUICK.

GMC.



SCOTT THOMPSON

HOWELL, INC.

Highway 51 North
Summit, MS 39666

601-276-7711

www.howellmotorsinc.com




Alford's
"YOUR CREATIVE ANSWER"

Trisha Ray

Flowers and Gifts

601.684.4181
601.684.4176 Fax
1.800.955.6543

115 North 6th Street
McComb, MS 39648
alfordsflowers@bellsouth.net
www.alfordsflowers.com




BREAK A LEG, RAYLAN!!


CPR by Lissa

Melissa Fontenot, LPN
AHA certified BLS Instructor
I will travel to you!

Students, babysitters, medical professionals, and lay people.




**American Heart
Association**



**AUTHORIZED
TRAINING**

LET'S GET SLUSHIED



TOPI SAW GENERAL
McCOMB MISSISSIPPI

café . bakery . artisan goods

Monday - Friday 10 til 3
105 Main Street
downtown McComb

daily lunches . sweets + coffee
private parties . office catering
local events . classes + retreats

David + Edie Varnado
shop: 601.600.0248
catering: 601.551.8744

topisawgeneral.com

McComb

Market



**1209 Delaware Ave.
McComb, MS 39649
Phone: 601-684-1988**

**Charlotte's Web
and other CBD brands
sold at
Natural Health
304 Jackson Ave.
McComb, MS 39648
601-600-2603**



Break a leg,
Emma!
We love you!
Daddy, Mama,
Gavin, & Jazzy



Jeff Webb CLU®, Agent
Chairman's Circle

1024 Highway 51/98, Suite A
McComb, MS 39648-8710
Bus 601 684 4531 Fax 601 684 4532
www.jeffswebb.com



Providing Insurance and Financial Services

Disgah Potters

1043 Kodiak Lane
Summit, MS 39666

Laurie Steele
601-551-2869

Phillis Waller
601-248-7795

jwaller@cablone.net

Find us on Facebook



*We are open by appointment
or by chance.*

Unique handcrafted pottery
Dishes are food, dishwasher and oven safe.

RAWLINGS BROKERAGE COMPANY

rawlingsbrokeragecompany.com

KENNON H. SINGLEY

P.O. BOX 929
McCOMB, MS 39649
CELL: 601-248-9246

PH.: 601-684-1241
800-876-1241
FAX: 601-684-1337

STATEWIDE POOLS, INC.

WE BUILD, SERVICE, AND SUPPLY SPAS & POOLS

LUKE BREWER
OWNER

* 2 LOCATIONS:

203 LAUREL STREET-SUMMIT, MS
1256 HWY 51 N- BROOKHAVEN, MS
601-276-7450 OR 601-823-1259
CELL: 248-5102
STATEWIDEPOOLSMS@GMAIL.COM
STATEWIDEPOOLS.COM


A circular portrait of a woman with dark hair, smiling, wearing a white top. The portrait is set against a background of a black and white floral pattern with a pink border.

Tammy Wells
Independent Director
mythirtyone.com/tammywells
601-249-7042
tammywells31@me.com
thirtyone
Contact me for all your Organizational and Gift-Giving needs.



JoJo Kent
MS Licensed Real Estate Agent



Doug Rushing Realty, Inc.
311 Apache Drive
McComb, MS 39648

Mobile: **601.810.6371**

Office: **601.249.3400**

jojo@dougrushingrealty.com

www.dougrushingrealty.com

*Best wishes to
Waylon, Noah, & Blade Martin*

Boyd Insulation, Inc.

Fiberglass • Blown In • Spray Foam

*For all your
Insulation Needs*



Yates Boyd, Owner

601.551.8068

Mower Man LLC.

Small Engine Repair & Service

Lawn Mowers & 4-Wheelers

New Parts Sales - Blades, Tires, Filters & Etc.

8332 Burt Jordan Rd Se
Smithdale, MS 39664

601-567-2432

Jim Jordan - Owner

Break a leg, Alexa!



BReak a Leg, Pailyn!

We aRe So pRoud
of you & can't
wait to watch
you in your
theater
debut!

Love you much!

Mom, Dad
& Bennett

Charlotte's
Narrator II Web 2019

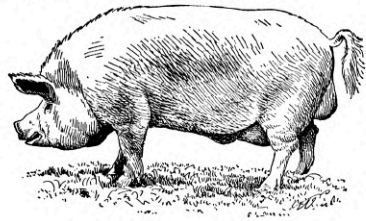


**PROUD SPONSOR OF
PIKE COUNTY LITTLE THEATER**

"Whatever you do, do it enthusiastically, as something done for the Lord and not for men, knowing that you will receive the reward of an inheritance from the Lord. You serve the Lord Christ." Colossians 23:23-24

Break a Leg Bryce!!!

*Love,
Memaw and Papaw*



Vine Brothers Quality Meats, Inc.

WWW.VINEBROS.COM



115 Hwy 24 East

P.O. Box 10

Centreville, MS 39631

601-645-6333 Store

601-645-6315 Fax



We love you Caroline and are SO proud of you!!

Mom, Day, Sydney and Lily

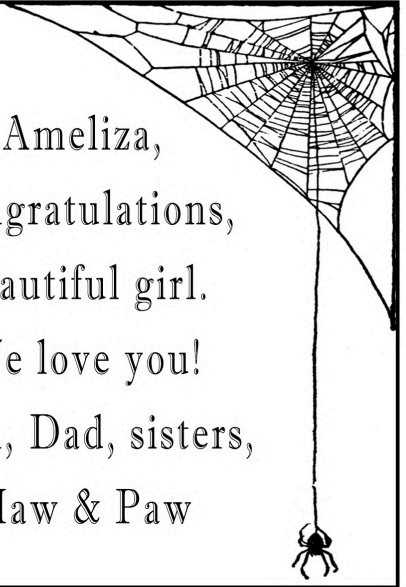
Meme and Pawpaw

Grandma



Legends
 Portrait Studio Elise D. Parker
 601.551.7323

Ameliza,
 Congratulations,
 beautiful girl.
 We love you!
 Mom, Dad, sisters,
 Maw & Paw




Anna Claire Fortenberry



You are our Star, Ace!!!!

**LOVE,
 POP-POP AND GRAM
 "YOUR BIGGEST FANS"**



Break A Leg PCLT Cast!



In House Design
& Printing

Locally
Owned
&
Operated

Eighteen Seventeen

Custom Screen Printed T's
Schools • Fundraisers
Businesses • Events

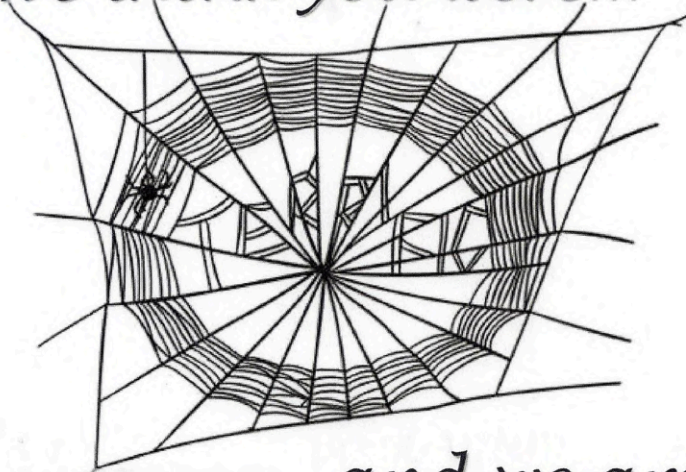
601-300-0506

710 Robb St. Summit, MS 39666

email: info@eighteenseventeen.com

Like us on Facebook Follow us on Instagram

We think you were...



*...and we are
SO proud of you!*



*Love,
Mom, Dad,
Brooke & Emma
Grandma Connie &
Grandpa Bob
Carl & PatPat*





Break a
leg,
Nathan!

Clifford Holifield
Holifield Flooring & Trim LLC

601-248-0551

Hardwood Tile | Stairs Trim
Sand/Refinish | Install/Repair



With the right words,
You can change the world.

- E.B. White, *Charlotte's Web*



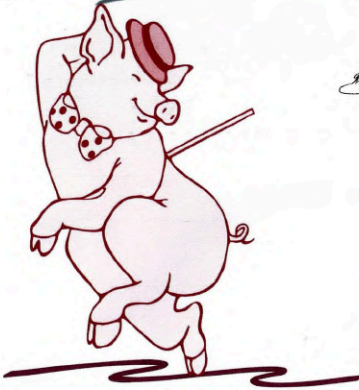
The Women's Health Center P.L.L.C.
OBGYN | McComb, Mississippi

601-684-2300



www.TheWomensHealthCenterOBGYN.com

*Be
Radiant*



212-214 Main Street
McComb, MS.
(601) 684-9404

thedancestudio@att.net

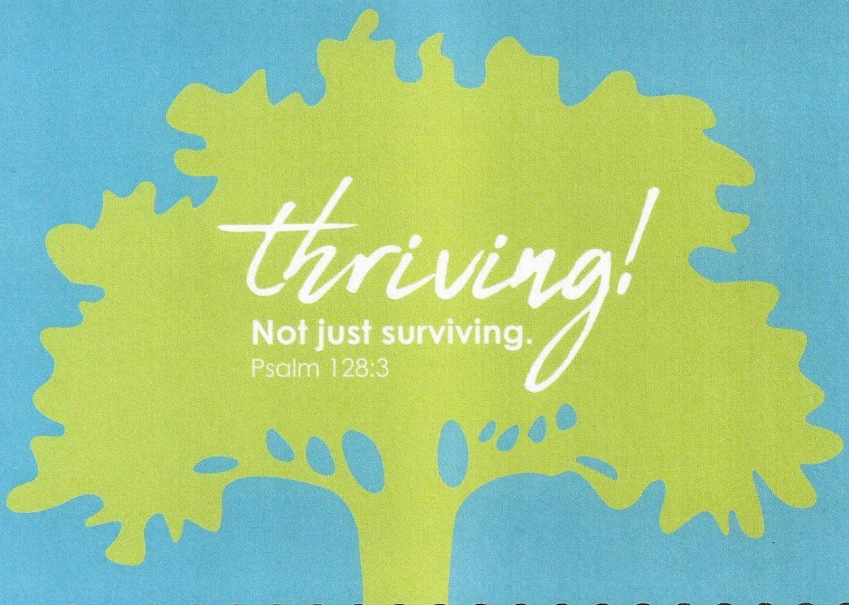


WM Food Services, Inc.

HESWM

Home Educators of Southwest Mississippi

is a Christian homeschool group where encouraging, supporting, and enhancing home education are our goals.



thriving!
Not just surviving.
Psalm 128:3

BREAK A LEG HESWM STUDENTS...
WE ARE SO PROUD OF YOU!

Visit us online at HESWM.COM or find us on  at HESWM.

THE EPISCOPAL CHURCH WELCOMES YOU



EPISCOPAL CHURCH OF THE
MEDIATOR-REDEEMER



8:00 SUNDAY MAGNOLIA

10:30 SUNDAY MCCOMB



*Congratulations on
y'all's debut at the
Pike County Little
Theatre!!*

*May God bless and
help you do your best!!*

We love Y'all!

*Mama, Daddy,
Mamaw Diane, and
Papaw Glenn*

THERE'S AN **ART** TO GREAT PARTNERSHIP.

Trustmark is proud to partner with arts programs across the South to enrich the lives of others. Supporting the community isn't just something we do—it defines who we are. After all, we want to be more than just another bank. We want to be a partner you can count on. People you trust. Advice that works.



Trustmark

trustmark.com



Member FDIC

Thank you
for supporting the
Pike County Little Theatre

Empowering the arts benefits us all.

An active art community
leads to a better economy,
more social interaction,
increased academic performance,
and improved healthcare
for the entire community.



Where Customers and
Community Matter Most®



Member FDIC

Central Office Supplies, Inc.



We've Got It!

- Office Furniture • File Cabinets
- Office & School Supplies • Rubber Stamps
- Printing • Laser Toner & Ink Cartridges

Locally owned & Operated
216 W. Michigan Ave., McComb
601-684-2982

Visit us on the Web @ www.centralofficesuppliesinc.com



*Overdo it
during the holidays?*



Start the new year off right!



329 Anna Dr, McComb, MS 39648 • (601) 600 - 2102



Specializing in public and private social painting parties for kid and adult birthdays, Girl's Night, church groups, and company events.

Barb's Party Palette BRINGS THE PARTY TO YOU!

We partner with local businesses to offer fun and creative painting parties at your favorite venues. We can even come to your home!



*Barb's Party
Palette*

*Look for upcoming public events or book your own private party on our Facebook page.
(910) 474-8753 or (601) 680-9131
barbspartypalette@gmail.com*



"You have been my friend. That in itself is a tremendous thing."
--Charlotte



Whether it's for a yearly checkup or to help a child who's feeling badly,
we love caring for your children in our new clinic at 309 Llewellyn Ave.



Michael Artigues, MD, FCP



Christopher Charles, MD, FAAP, FCP



Antoinette Hubble, MD, FAAP



Maranda Guess, CPNP



Nicole Hutson Simone, CPNP



Jennifer Meilstrup, CPNP



Kimberly Pope, CFNP



Sunja Tate, CFNP

Call for an appointment today. 601-684-7623
"Like" us on Facebook! [Facebook.com/mccombchildrensclinic](https://www.facebook.com/mccombchildrensclinic)
Visit us on the web: www.McCombChildrensClinic.com



HAVEN
BLT
BROOKHAVEN
LITTLE
THEATRE

Live on Stage!
Apr 26 thru
May 12

Disney **THE LITTLE MERMAID**

Historic Haven Theatre
126 W. Cherokee St. | Brookhaven, MS | 601-990-2243

haventheatre.org

mac
MISSISSIPPI ARTS COMMISSION
support imagine artists

Miss K's
**Home
plate**

943 E Main St Liberty, MS

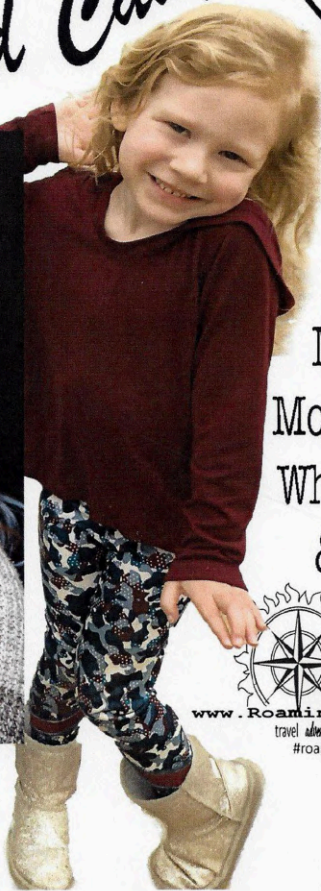
Slide On In!

Make your home Miss K's!
(601) 657-4860

Break a leg, Emma!

**“Break a leg!”
in the Limelight of
your adventure!**

Ellen and Cady



Love,
Nanna,
Mom & Dad
Whit, Knox
& Quin



www.RoamingParkers.com
travel • adventure • conservation • food
#roamingparkers



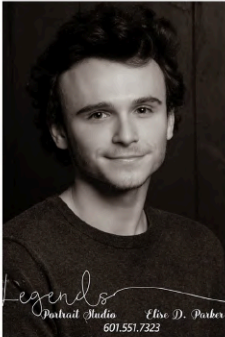
Turnage and Sons, LLC

547 Airline Hwy

Tylertown, MS 39667

"With God All Things are possible" Matthew 19:26

Congratulations
to the cast and crew of PCLT's performance of
"Charlotte's Web"



Special Wishes to
Blade, Noah, and Waylon Martin
and Anna Claire Fortenberry
We are very proud of you all.

ANNA CLAIRE FORTENBERRY



**WE ARE SO PROUD OF YOU, ACE!!!!
BREAK A LEG!!!!**

**LOVE,
DADDY, MAMA, AND JACKSON**



Lolo,
Break
A Leg!



Legends
Portrait Studio Elise D. Parker
601.551.7323



Legends
Portrait Studio Elise D. Parker
601.551.7323

Steven Hebert,
you are a Great
Gander Mate!





Great job,
Sarah!
We're so
proud of
you!



		holifieldengineering.com
	Lola Holifield	
	(601) 248-2031 lola.holifield@holifieldengineering.com	
	"Helping Engineers Make Ideas Happen"	

Holifield
 Engineering, Inc.
 1062 Golf Lane, Summit, MS 39666



You're the best
around.

Break a leg! Love you!
Papa, Natalie, and Jude



Coca-Cola is a
proud sponsor of
Pike County
Little Theater

Reaching the
Community
one coke at a time



Latha Pevey
On Premise Business Development Manager
latha@pevey.com
601.654.8223
601.303.3212

GRAPHICS
etc.

218 Main Street
Downtown McComb, Mississippi

(601) 249-3101 phone
(800) 621-7759 toll-free

Monday-Thursday 9am-5pm
Friday 9am til noon

Let us help with your...

invitations favors posters custom design photo prints & gifts canvas prints
gallery wraps promotional products stickers menus custom shirts
accessories programs cards awards banners and stand rental

BUSINESS

business cards forms copies promotional products large format laminating
large format printing posters flyers logo design ad design custom shirts
letterhead envelopes labels awards banners signage decals

EVENT

...We're here for you

UPCOMING PERFORMANCES:



April 25-28

A LITTLE PRINCESS

Director: Robin Impson

Auditions March 5 at 6:30 at PCLT!



July 18-21

*Sweeney Todd: The Demon
Barber of Fleet Street*

Director: Ryan Temple



Oct 10-13

*Agatha Christie's
The Mouse Trap*

Director Seth Karass



Dec 5-8

*Christmas at Ronda's
Limelight Cafe*

Directors: Ryan & Jennifer Temple

ACKNOWLEDGEMENTS

This production is the collective effort of 2 extremely talented casts and a host of individuals who have worked tirelessly behind the scenes.

Special thanks to:

Centenary United Methodist Church for rehearsal space

Enterprise Journal ~ K-106 ~ WAZA 107.7 ~ Supertalk 93.5 for promotion

Shannon & Heather Reagan for the loan of the PRECIOUS PIGLET, Wilbur!

Michelle and Louis Lombas for the loan of Persimmon and Fancy Pants
(goat & gander)

Christopher Hart, Michael Gutuso and
Charles Schilling for being Extremely helpful and accomodating with the building

Dave Hughes for lending his voice

Larry Quin for playbill copies

Jeff Benner for promo video

Ryan Temple for the Super Cute poster and cover design

And to anyone I've forgotten..... please forgive me! You ARE appreciated!!!

Director's Closing Thoughts

There are simply not enough words to express my gratitude to Everyone that has been a part of this production. It has been Such a delightful journey. It has been a Joy to watch these young people develop their characters and confidence. For some, it is their First experience on stage!! For others it is the first time they have performed on a "Big" stage. They have done a Fabulous job and I am beyond proud of them. To my "support team" which consists of friends of Many years and some of a few months, THANK YOU. This would not have happened without you. From your words of encouragement to your endless hours behind the scenes preparing snacks, selling tickets and ads, working on scenery and props..... the list goes on and on. My mother Loves to say of me "You have a way of surrounding yourself with people who make you look good!". And yes mom, I've done it yet again!! I Love this Family!!!!

